



HYDRAULIC



GEMELS Srl was founded in 1969 as a Company specialized in the **designing** and **manufacturing** of ball valves from 1/4" up to 24".

A worldwide leader in industrial & hydraulic field, **GEMELS** since 2010 started to focalize and to invest more and more also in OIL&GAS field.

In the middle of North Italy, **GEMELS** is located in *Trescore Balneario, Bergamo*, less than 50 km from Milan, with an area of more than 10.000 mq.

Company

QUALITY CERTIFICATIONS

ISO9001:2008

ISO14001:2004

OHSAS18001:2007



PRODUCTS CERTIFICATIONS

API 6D
 97/23/CE PED mod. H
 CE PED mod. A1
 EAC
 TÜV IT 07 ATEX 002 AR
 TÜV IT 07 ATEX 074 AR
 FUGITIVE EMISSION
 TA LUFT
 FIRE SAFE
 CRN
 SIL 3

Certifications



SJ SWIVEL JOINTS

Application: Swivel Joints compensate occasional rotations
Rotation: not continuous, only alternate movements
Threads: BSP – NPT
Sizes: 1/4", 3/8", 1/2", 3/4", 1", 1.1/4", 1.1/2", 2"
Material: carbon steel
Temperature: -20°C / +80°C



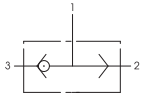
DDF 3 WAYS FLOW DIVIDERS

Application: 3 ways flow dividers are employed to reverse the oil flow
Threads: BSP
Sizes: 1/4", 3/8", 1/2", 3/4", 1"



GEV SHUTTLE VALVES

Threads: BSP – NPT
 Size: 1/8", 1/4", 3/8", 1/2", 3/4", 1"
 Material: carbon steel
 Temperature: -20°C +100°C
 Pressure: PN 250



GPS 3 WAYS SINGLE PILOT OPERATED CHECK VALVES

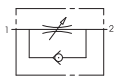
Size: 1/4", 3/8", 1/2", 3/4", 1"
 Material: carbon steel
 Temperature: -20°C +100°C
 Pressure: 350-400bar





RF FLOW CONTROL

Threads: BSP – NPT
Size: 1/4", 3/8", 1/2", 3/4", 1"
Material: carbon steel
Temperature: -20°C +100°C
Pressure: PN 350



BD FLOW CONTROL B-DIRECTIONAL

Threads: BSP – NPT
Size: 1/4", 3/8", 1/2", 3/4", 1"
Material: carbon steel
Temperature: -20°C +100°C
Pressure: PN 350

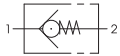


REDUCE
FLOW
BD



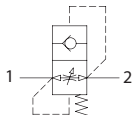
VU CHECK VALVES

Threads: BSP – NPT
Size: 1/4", 3/8", 1/2", 3/4", 1", 1.1/4", 1.1/2", 2"
Material: carbon steel / stainless steel
Temperature: -20°C +100°C / -30° +100°C
Pressure: PN 500



VUBA HOSE BREAK VALVE

Size: 1/4", 3/8", 1/2", 3/4", 1"
Material: carbon steel
Temperature: -20°C +100°C
Pressure: 300-350bar





VBPSE

SINGLE PILOT
OPERATED
CHECK VALVES

Threads: BSP – NPT
Size: 1/4", 3/8", 1/2", 3/4", 1", 1.1/4", 1.1/2", 2"
Material: carbon steel / stainless steel
Temperature: -20°C +100°C / -30° +100°C
Pressure: PN 500



VBPDE

DOUBLE PILOT
OPERATED
CHECK VALVES

Size: 1/4", 3/8", 1/2", 3/4", 1"
Material: carbon steel
Temperature: -20°C +100°C
Pressure: 300-350bar



www.gemels.cn

